

TRANSPORTATION AND LUNCH PROVIDED

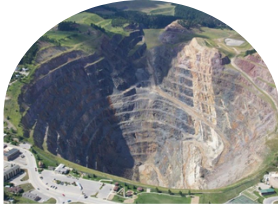
SDTA

South Dakota Telecommunications Association

GUEST PROGRAM

August 18, 2025 ** 9:00 am - 4:00 pm ** Open to all registered guests.

DEPARTURE 9:00 AM - PICK UP FROM THE LODGE AT DEADWOOD



9:15 AM

Our first stop is at **Homestake Mine**, once the largest gold mine in the western Hemisphere. Now home to Sanford Research facility, conducting amazing scientific research over a mile underground. Learn about the Black Hills gold mining past, and scientific future!



10:30 AM

Transfer to the **Historic Homestake Opera House**. Built in 1914 by Phoebe Hearst and her Homestake Gold Mining Company, this historic performing arts venue and recreation center boasted an exquisite theater with 1,000 seats, and a library, a bowling alley, a billiards hall, a social hall, and a heated indoor swimming pool.

TRAVEL FROM LEAD TO SPEARFISH CANYON - 20 MINUTE DRIVE



2 HOURS

Stretching 19 miles along U.S. Highway 14A, the **Spearfish Canyon Scenic Byway** is a breathtaking drive through towering limestone cliffs, verdant forests, and cascading waterfalls. Carved by Spearfish Creek, the canyon's walls rise up to 1,000 feet, showcasing layers of ancient rock formations. We'll stop at Roughlock falls for a **short walk and take a picnic lunch** within the Canyon. (Lunch provided)



12:45 LUNCH

2:00 PM HISTORIC NATIONAL FISH HATCHERY AND ARCHIVES



The **D.C. Booth Historic National Fish Hatchery & Archives** in Spearfish, South Dakota, is one of the oldest operating fish hatcheries in the United States, established in 1896 to propagate trout in the Black Hills region. Today, it serves as both a working hatchery and a museum dedicated to preserving the history of fish culture and conservation.

Our tour will include not only visits to the museum and grounds but also a replica of a historic railcar used to transport fish across the country before refrigerated trucks existed. It's the only federal fisheries railcar exhibit in the U.S., illustrating a 66-year era of fish transportation. We also visit the Booth House - Built in 1905 for the hatchery's first superintendent, Dewitt Clinton Booth, this Neo-Colonial Revival home remains largely unaltered, featuring period furnishings and family memorabilia.

**4:00 PM---ARRIVE
BACK AT THE LODGE
FOR THE SDTA
SOCIAL HOUR AND
BANQUET**